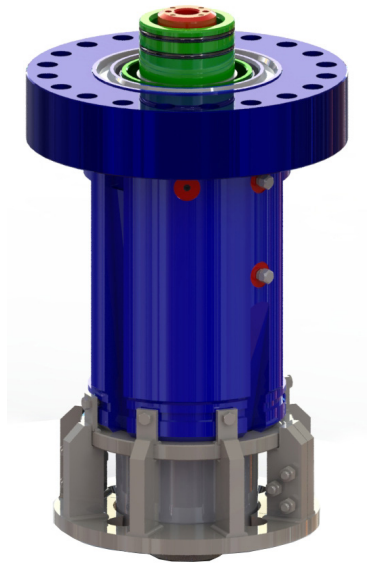


Seaboard™ Latch Back Pressure Valve (LBPV) Drill-Thru System

Enables safer, more efficient drill-thru operations

SPM™ Oil & Gas

A Caterpillar Company



Game-changing latch profile

The new Seaboard™ LBPV Drill-Thru System, compatible with the Unitized™ Lock-Ring (ULR) and S-29-LR Wellheads, replaces conventional, threaded H-type back pressure valves with an innovative latch design that eliminates the potential for pressure integrity issues and NPT due to thread damage that can occur while drilling through the wellhead.

Safer drill-thru operations

The Seaboard™ LBPV Drill-Thru System was specially designed to accommodate a larger ID—promoting safer, more efficient drill-thru operations. For increased reliability, a proprietary washout tool cleans the internal profile and removes debris prior to installation of the Seaboard™ LBPV system. The expanded ID enables wear bushing to be installed via the sleeve, protecting the profile. It allows for drill bits up to 6 1/8 in, enabling drilling engineers to drill deeper and more efficiently, for improved well design, cost, and performance.

Superior sealing performance

The proprietary latch profile overcomes the legacy challenges of threaded systems, enabling the valve to engage and seal the well—even when wear is present. With a self-energizing S-seal instead of a traditional compression packing seal, the Seaboard™ Latch Back-Pressure Valve System protects the integrity of the well and prevents any pressure extrusion gaps. Its upgraded sealing technology withstands pressures up to 15,000 psi.

Technology-driven process

The Seaboard™ LBPV Drill-Thru System features a simplified, streamlined design that reduces human error, minimizes maintenance requirements, and saves hundreds of thousands of dollars in NPT. With the Seaboard™ LBPV Drill-Thru System, all prep is done in the primary seal packoff instead of the hanger, enabling quick and easy retrieval if necessary. Instead of having to cut the casing to retrieve the back pressure valve from the hanger, operators can simply replace the Seaboard™ LBPV System using just a dry rod lubricator or high-tier hydraulic lubricator. This eliminates hours of intervention time and saves millions of dollars compared with removing a damaged casing hanger.

Features

- Patent-pending latch profile
- Compatible with Unitized™ Lock-Ring (ULR) and S-29 Lock-Ring Wellhead
- 15,000-psi pressure rating
- Large inside diameter (ID) accommodates drill bits up to 6 1/8 in
- Accommodates 4 1/2 or 5 1/2 inch liner
- Self-energizing interference seal
- Testing pressure capability prior to retrieval
- Compatible with dry rod and hydraulic lubricator
- Wear bushing delivers unmatched protection to the LBPV profile
- Washout tool cleans debris and increases valve reliability

Benefits

- Engages and isolates production casing—even when wear is present
- Eliminates potential pressure integrity issues
- Reduces nonproductive time (NPT) and costs
- Mitigates health, safety, and environment (HSE) risks
- Speeds installation and simplifies maintenance requirements

Application

- Drill-thru liner operations

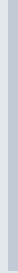
Specifications

Configuration.....	7 in
Weight	60 lb
Pressure Rating	15,000 psi
Operating temperature	-20°F to 250°F
Primary dimensions	6.38 in
Primary seal ID bore.....	6.38 in
Latch back pressure ID prep	6.76 in
Seal type	S-seal

Legacy Solution



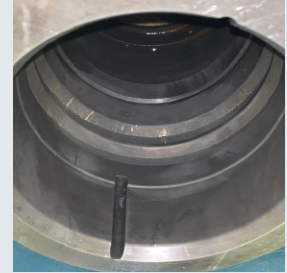
Type "H" BPV damaged during liner operations



New Solution



Wear bushing



Seal Assembly with Latch BPV Profile

SPM Oil & Gas Pressure Control

13822 Furman Road, Suite J
Houston, TX 77047
USA

T +1 713 644 3435
F +1 713 644 3737

pressurecontrol@spmoilandgas.com

www.spmoilandgas.com